



502 • Desk console

Desk console

- desk console in light aluminium design
- hood fits inside bottom piece and is screwed together from underneath
- perfectly suited for the use of sealed keypads

Application:

for control units such as sealed keypads

Material:

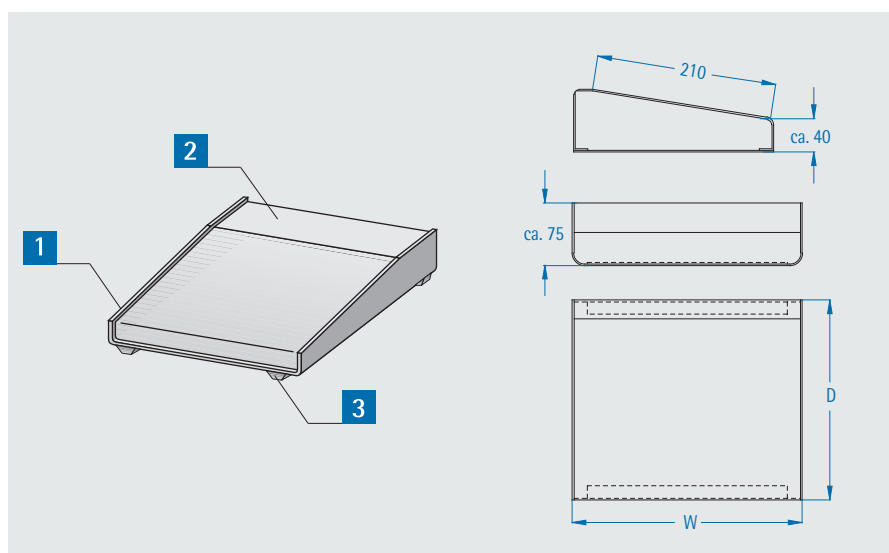
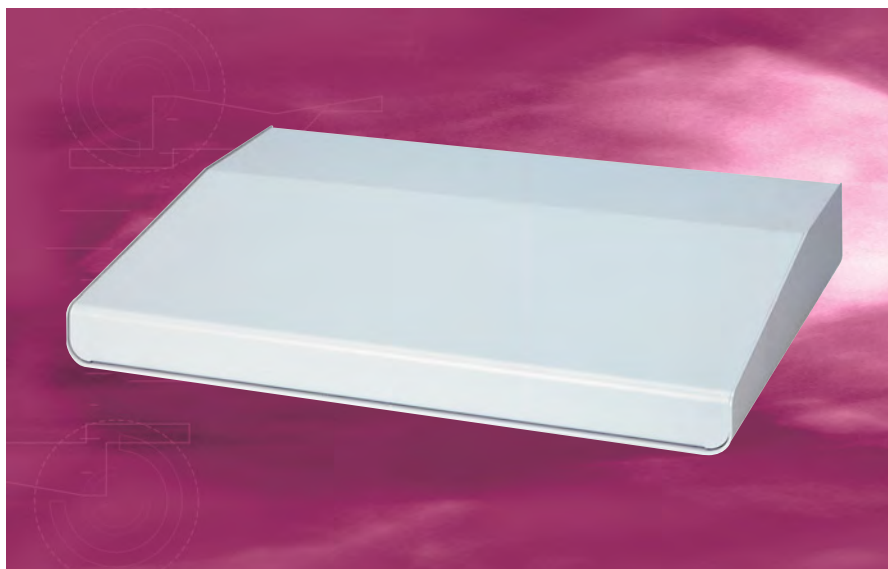
aluminium , 2.0 mm

Finish:

RAL 7035 light grey

Delivery:

not assembled



Additional sizes and customised treatments (e.g. screen printing) on request.

Delivery

Item	Pc.	Description
1	1	Bottom shell
2	1	Cover hood
3	4	Case feet, self-adhesive
4		Assembly material

W mm	D mm	Order no.
490	240	502-001
420		502-011
490	340	502-002
420		502-012